



MAKING YOUR DREAMS A REALITY

FITTING INSTRUCTIONS

BPFT-7049 and BPFT-7149

BPFT-7049(p) and BPFT-7149(p)

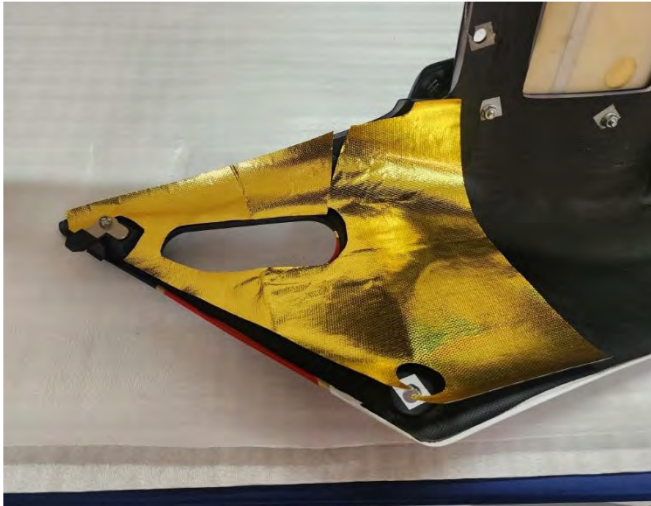
Seat Cowling, GRP, RC36-2, Single, RC30 Style , Street and Race



Note that the additional products listed are not included with BPFT-7049(p) and BPFT-7149(p) and must be purchased separately.

Fitting the BPFT-7049 and BPFT-7149 seat unit to your RC36-2 is very simple, but first you need to fit a few components to the seat unit. Note that there are two styles of seat unit, street and race. This instruction is primarily for the street seat.





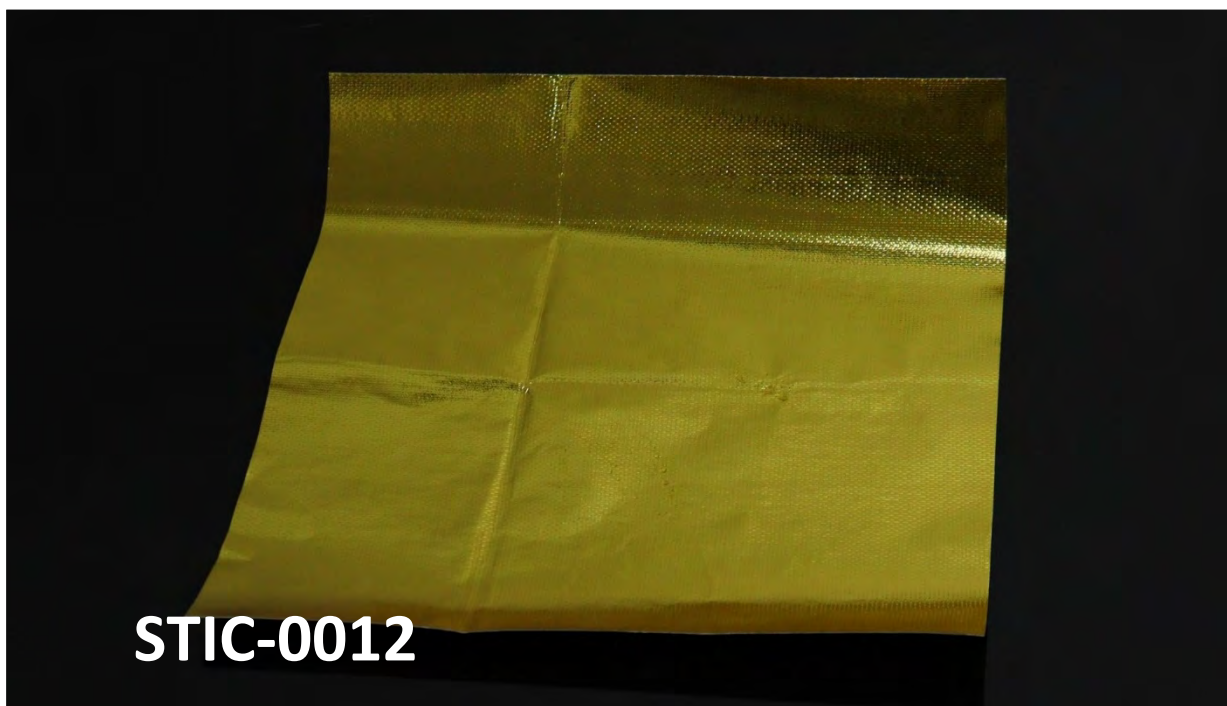
Included with the seat unit is a sheet of adhesive heat reflective sheet. This reduces the heat from the engine and exhaust pipes being conducted through the bodywork and helps protect the paintwork and also your leg from warming up too much.

For pre-painted seats the heat reflective sheet will be fitted for you prior to shipping. However for unpainted seats, the heat reflective sheet will be supplied separately and should be fitted by the user.

Some trimming or cutting of the heat sheet may be required and we have also included a small spare piece for filling in gaps.

This heat reflective sheet only needs applying to the inner right side of the seat due to exhaust routing.

If you need additional heat reflective sheet, please see [STIC-0012](#)



The additional components required are as follows:

TYBP-0007A	Fitting Kit for Seat Cowling BPFT-7049	Street
TYBP-0007B	Fitting Kit for Seat Cowling BPFT-7149	Race
BPSP-0013	Seat Pad, RC30 Style, Replacement	Street and Race
TYPP-0036	Lock Assy. RC36-2, RC30 Style	Street Only
BPSP-0012	Bum Stop, RC30 Style, Replacement	Street Only
BPSP-0010	Seat Bum Stop, RC30 Style	Race only

Honda RC30 or NC30 taillight. (We cannot supply this part)



TYBP-0007A



TYBP-0007B



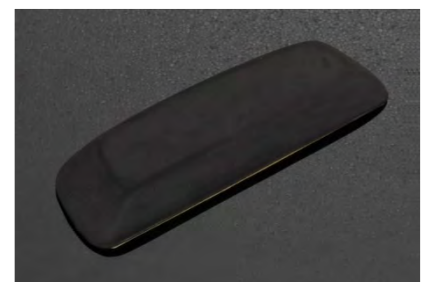
BPSP-0013



TYPP-0036



BPSP-0012



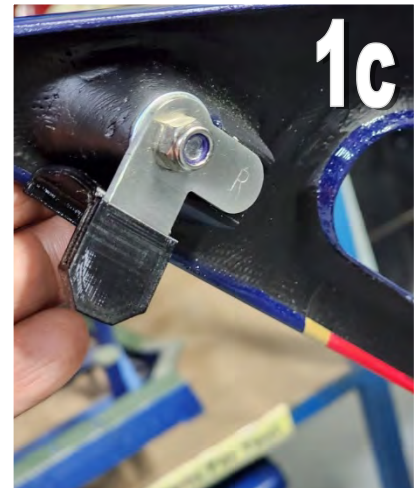
BPSP-0010



So let's get started.

For race version BPFT-7149(p) please skip steps 3, 4 and 9.

- 1)** The first thing to do is to fit the seat hooks and rubbers to the inside of the front mount of the seat unit. Use the bodywork bolt and plastic washer, and then secured from the inside with the M6 nut. Tighten this up.



- 2)** Fit the seat pad. This fits in exactly the same way as the standard RC30 seat pad. Secure the pad from the inside of the seat with the four nuts.



- 3)** Next fit the lock assembly to the luggage door.

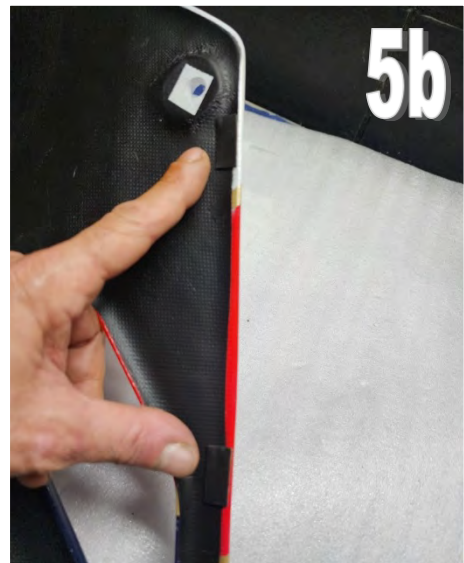
The lock is supplied preassembled with the tab, so just slide the lock through the hole, locate the notch and fit the locking plate and clip from the inside.



- 4)** For fitting the taillight, we supply three bushes and three bolts. The taillight fits in exactly the same way as the RC30



- 5)** There is small clearance between the front edge of the seat cowl and frame, so we advise to fit some thin rubber strip to the inside of the seat edge to avoid abrasion. Glue the four pieces as shown.



- 6)** To fit the seat, simply lower it over the sub frame and guide the front side down towards the frame rails being careful to avoid scraping the fuel tank. The seat hooks fitted to the front mounts should be guided to the inside of the frame to lock the front of the seat into position.



7) With the seat now lowered into position, check that the mounting holes line up.

The crossbar on the sub frame is adjustable, so we need to check that this lines up.

My advice is to fit the bodywork bolts to the rear mounts and then check the position of the front centre mount in front of the seat pad. If this doesn't line up perfectly, please adjust the position of the crossbar on the sub frame accordingly. Once this lines up, lock the crossbar bolts.



8) Refit the seat unit onto the subframe.

9) Before going any further, you need to lift up the back side of the seat unit and connect the taillight three pin plug.

Check that the taillight and brake lights work.

If you have fitted turn signals, then now it's a good time to give them a final check.

If all good. Move on

10) Now fit the bodywork bolts with their plastic washers. I found easiest to fit the rear bolts first, then the front centre bush and bolt in front of the seat pad, and then finally the lower mounts.



11) The final job is to fit the bum stop.

In the case of the BPSP-0012 street version bum stop, hook the top clips onto the inside of the seat hole and then push the bottom in. Turn the key anti clockwise to lock the bum stop in position.



For the BPSP-0010 race version, this is applied with double sided tape.

(Race version not shown).

Done!



www.tyga-performance.com

Reformatted by Force-V4.com