



## MAKING YOUR DREAMS A REALITY

# FITTING INSTRUCTIONS

### **BPFF-7049 Front Fender, GRP, RC36-2, RC30 Style**



Please note that the BPFF-7049 front fender is not supplied as part of the bodywork set as many people building their RC30 tribute bikes will want to fit a front end of their choice.

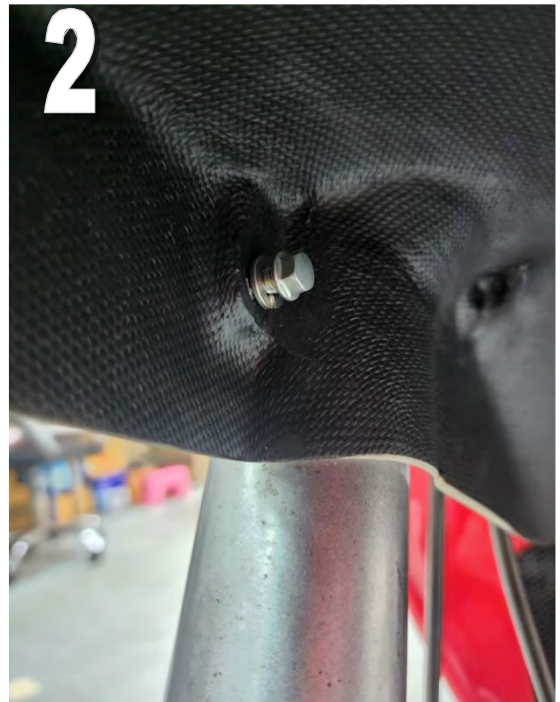
One point to note is that if you are using an SC28 front end then the TYGA RC30 front fender **BPFF-0011** or **BPCF-0011** can be fitted directly.

***The BPFF-7049 RC30 style front fender for RC36-2 is supplied with the mounting hardware included***

To fit the fender you need to remove the front wheel.

- 1)** Offer up the fender into position. You may need to squeeze it a little to fit between the forks as it is quite a tight fit.

- 2)** Fit the M6x16 bolts and the spring washers from the inside as shown. Do not fully tighten at this stage.



- 3)** Fit the M6x22 bolts from the outside.

- 4)** Tighten securely.

- 5)** Replace the front wheel and you are all done.

[www.tyga-performance.com](http://www.tyga-performance.com)

Reformatted by [Force-V4.com](http://Force-V4.com)