



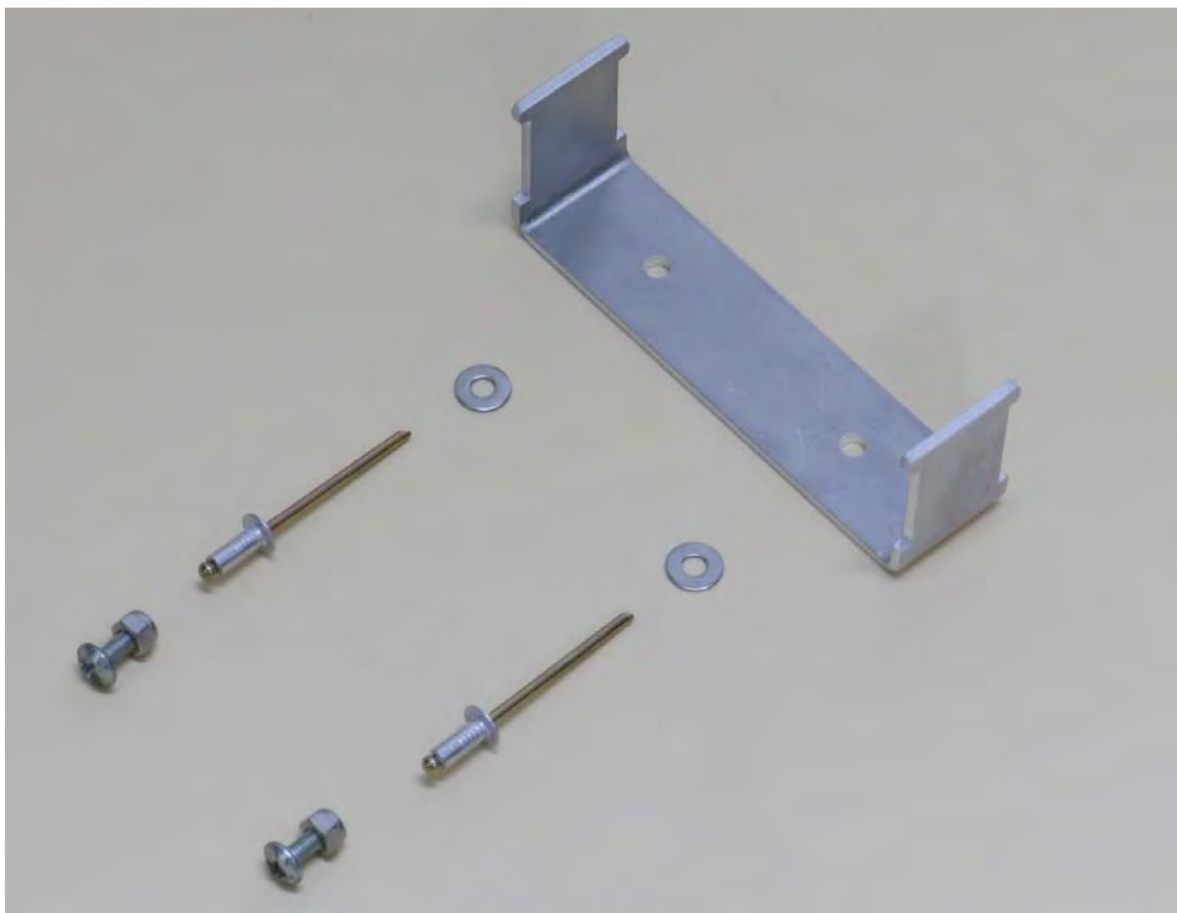
MAKING YOUR DREAMS A REALITY

FITTING INSTRUCTIONS

Drilling Template for TYLY-0314X

RC36-2 RC30 Style

ECU Stay, Honda Type



To mount the TYLY-0314X ECU stay, it is required that you drill a couple of small holes in the under tray and secure using either the supplied M3x12 bolts or the rivets.

Tools required are a 3.2mm drill bit (not supplied) and a regular electric/battery drill.

Please follow the instructions below.

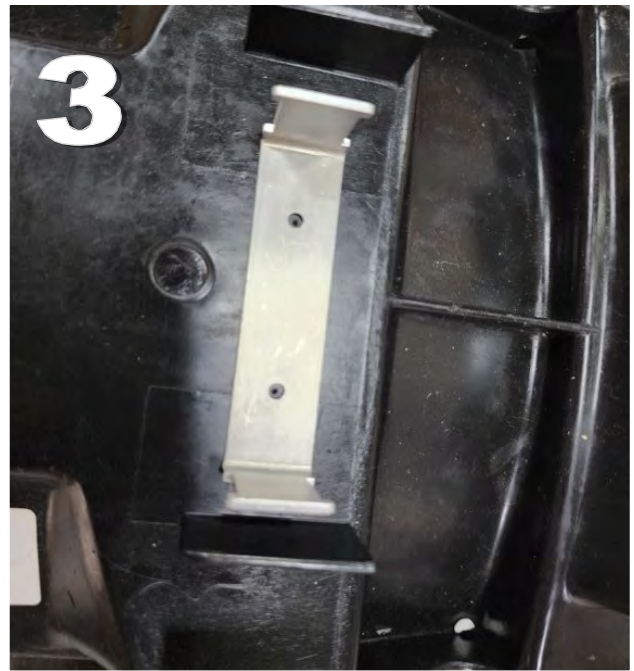
- 1)** The first plan is to slide the template into position so that it is touching the three upright plastic walls of the under tray. No measuring required. Just get it touching the three sides.



- 2)** With the template in position, use a sharp point to make a mark in the plastic. I used my carbide scriber, but just about anything sharp and pointy will do.



3) For a sanity check, offer up the ECU stay and check the hole positions and pitch are correct.



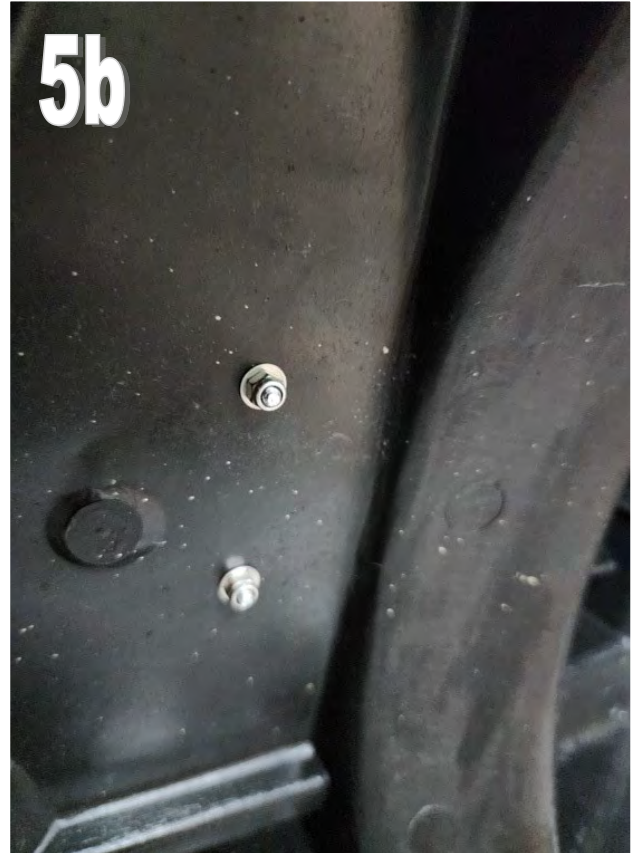
4) Now, drill one hole, and physically locate the ECU stay with a bolt (or rivet) so that you can check that it's going to plan so far.

Drill the second hole using the hole in the ECU stay as a guide if necessary



5) Now it's time to secure the ECU stay in its final position. Use either the M3 bolts and nuts, or the rivets for a more permanent solution.

Job done.



www.tyga-performance.com

Reformatted by Force-V4.com